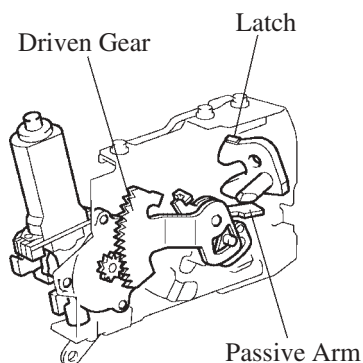


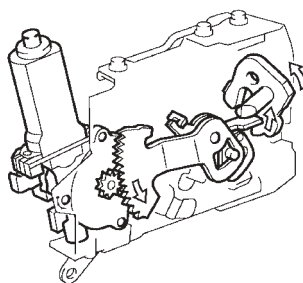
3. Construction and Operation

Door Closer Assembly

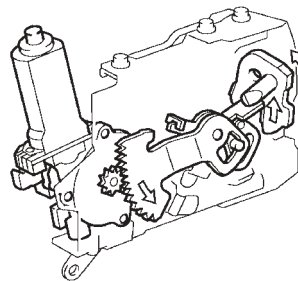
- The rotational movement of the door lock motor in the door closer assembly is transmitted to the driven gear via the pinion gear, in order to move the driven gear up or down. Consequently, the passive arm rotates to push and rotate the latch, causing the slide door that is ajar to fully close. Then, the driven gear rotates upward to return to its original (default) position.



Slide Door Open



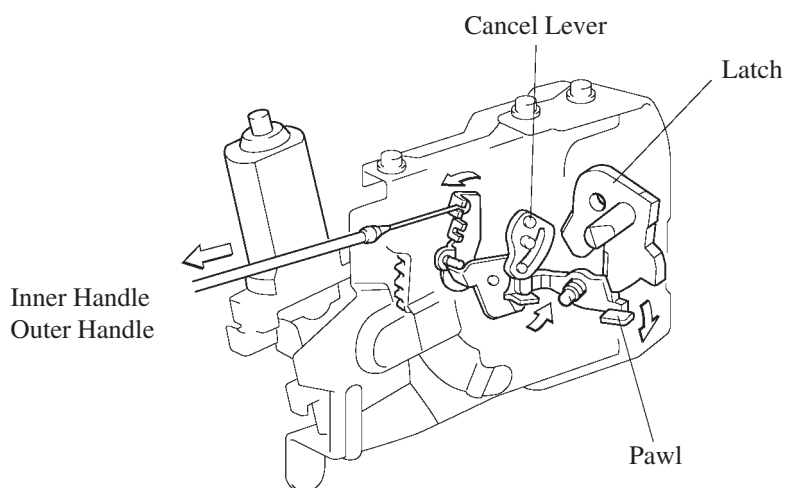
Half Latch



Full Latch

229HA06

- The door closer assembly is provided with a canceling mechanism in the event that a foreign object becomes jammed while the slide door closer system is operating.
- When the outer or inner door handle is operated while the slide door closer system is operating, this mechanism causes the cancel lever in the door closer assembly to move by way of a cable that is connected to both handles, in order to cancel the operation of the slide door closer system.

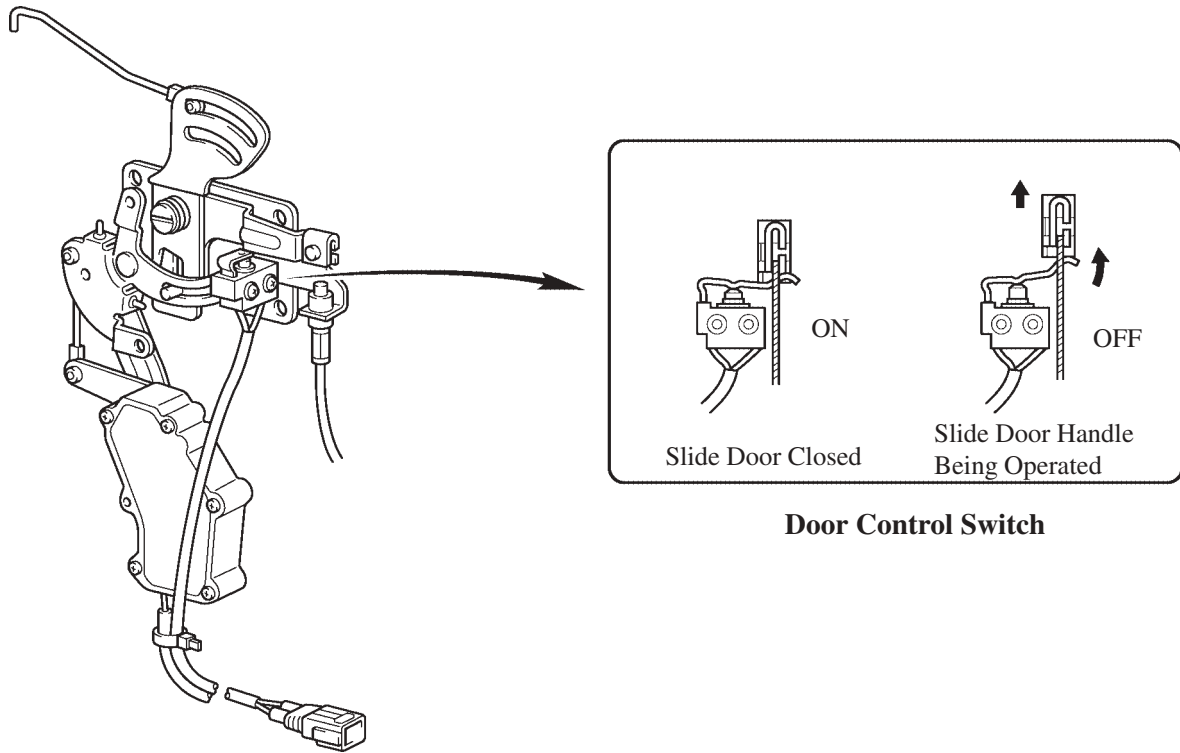


229HA09

Detection Switch

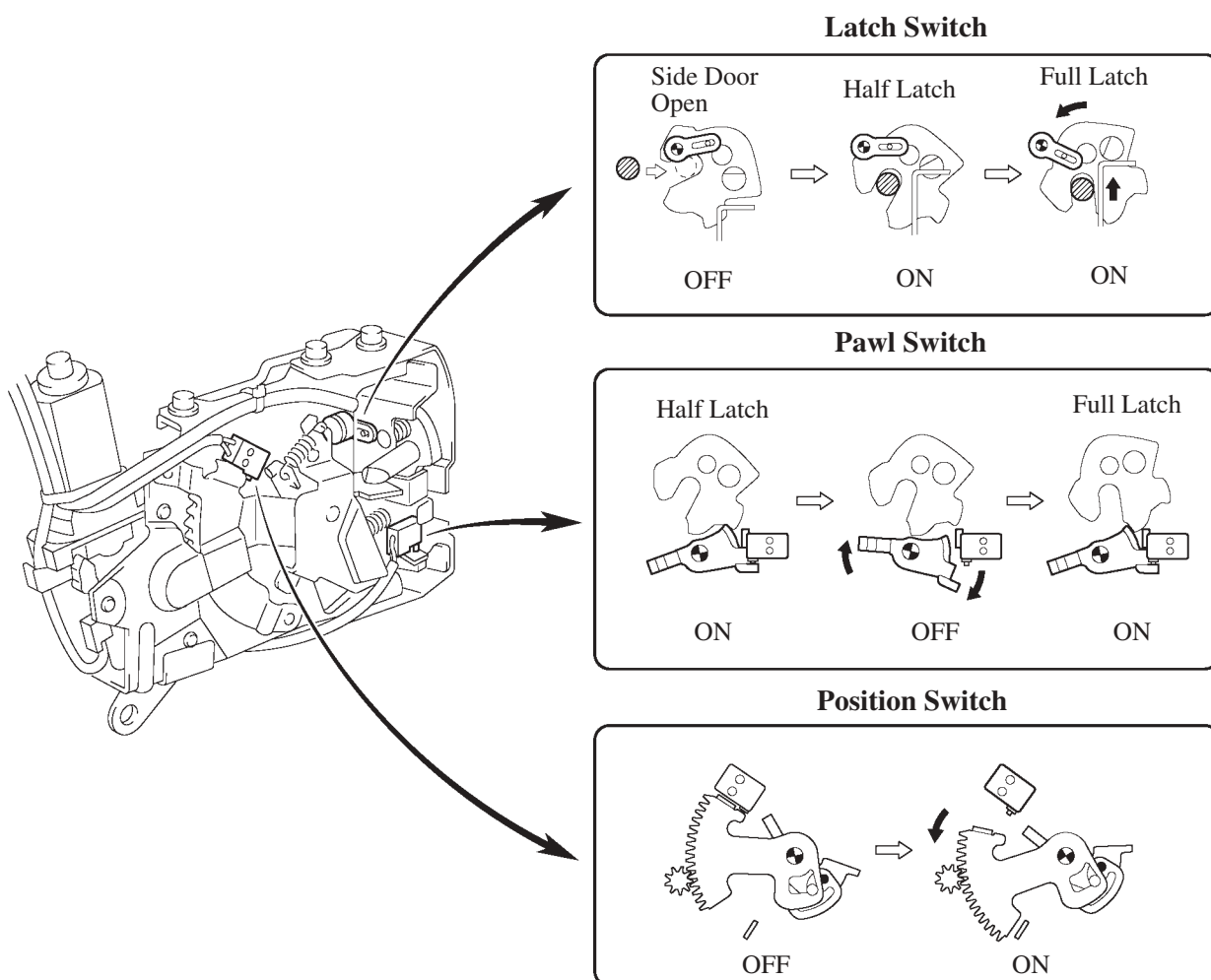
1) Door Control Switch

The door control switch in the door lock controller assembly detects whether or not a slide door handle (inside or outside) is being operated.



2) Latch Switch, Pawl Switch and Position Switch

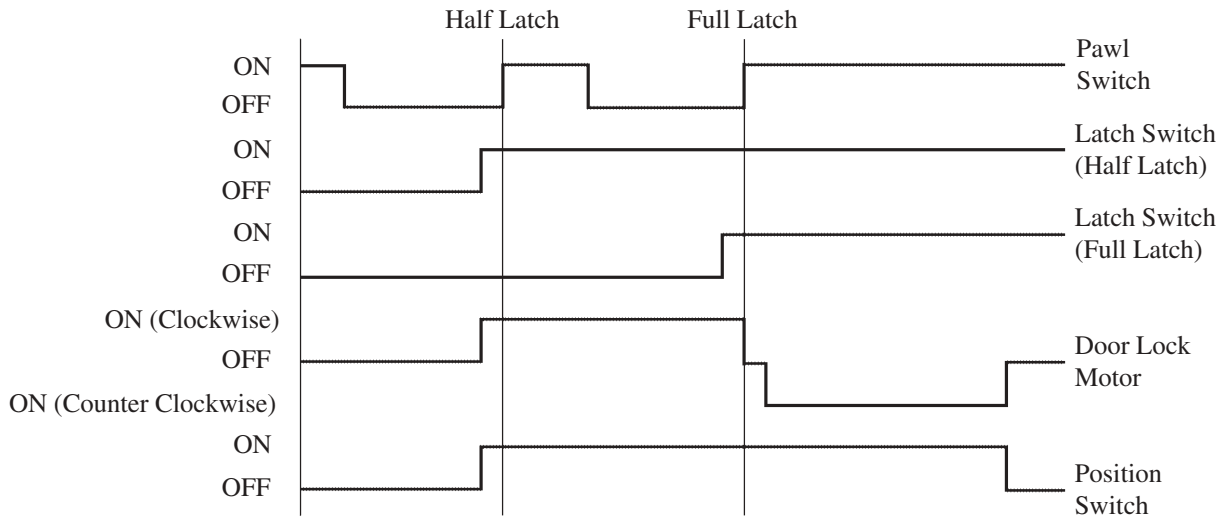
The latch switch, pawl switch, and the position switch in the door closer assembly detects the latch position (half or full), pawl position, and the default position of the driven gear.



Slide Door Closer Relay

When the slide door is ajar, the latch switch and the pawl switch detect the ajar state, and output the signals to the slide door closer relay. The slide door closer relay actuates the door lock motor to rotate in the forward direction in order to fully close the slide door. Then, the door lock motor detects the position of the driven gear through the state of the position switch, and the door lock motor stops after rotating in reverse to the default state.

► Timing Chart ◀



229HA04